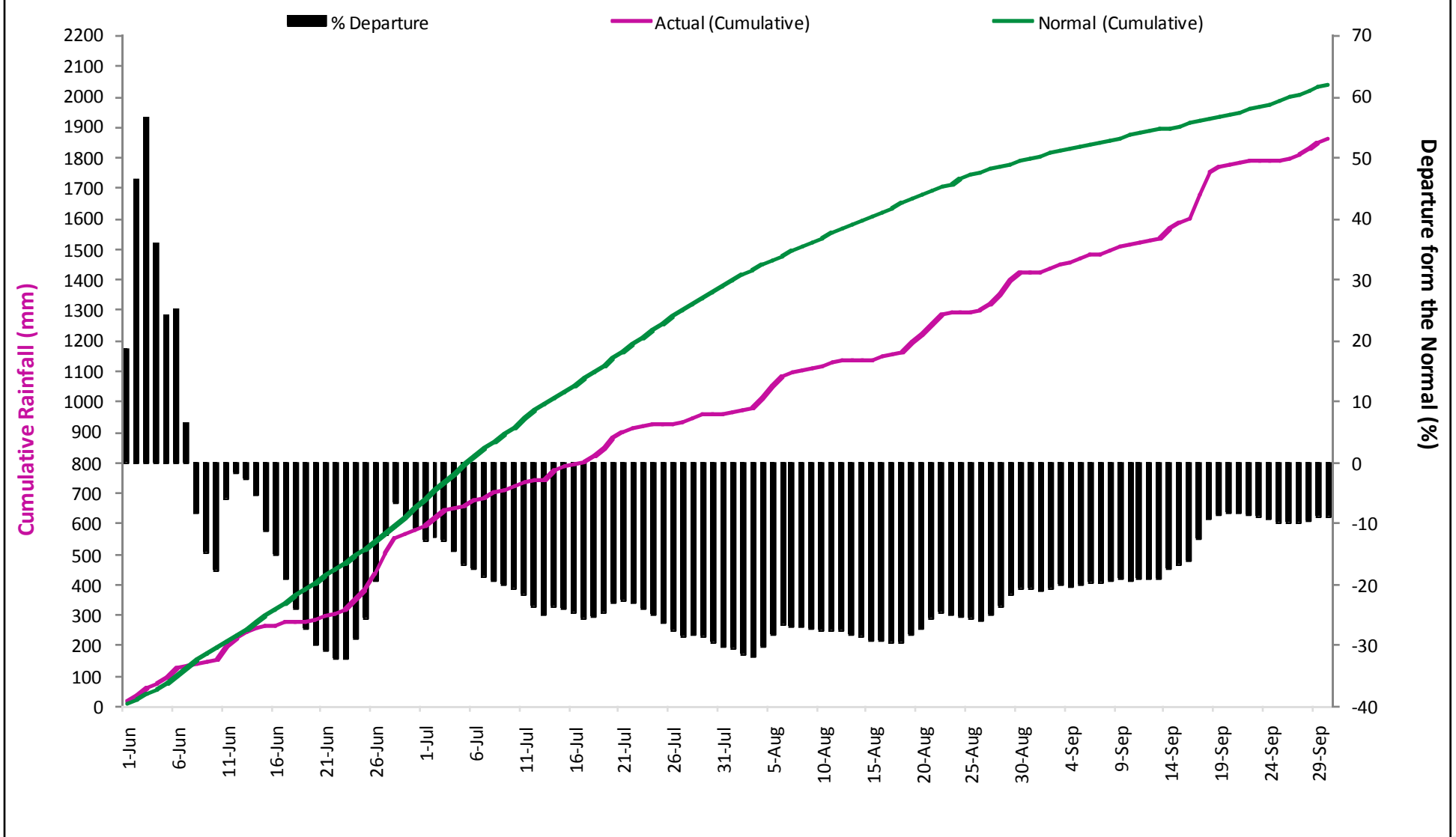


PERFORMANCE OF SOUTH WEST MONSOON 2017 OVER KERALA

From 01-Jun-2017 to 30-Sep-2017

CUMULATIVE RAINFALL FOR KERALA - SW MONSOON 2017



ACTUAL= 1857.38 mm

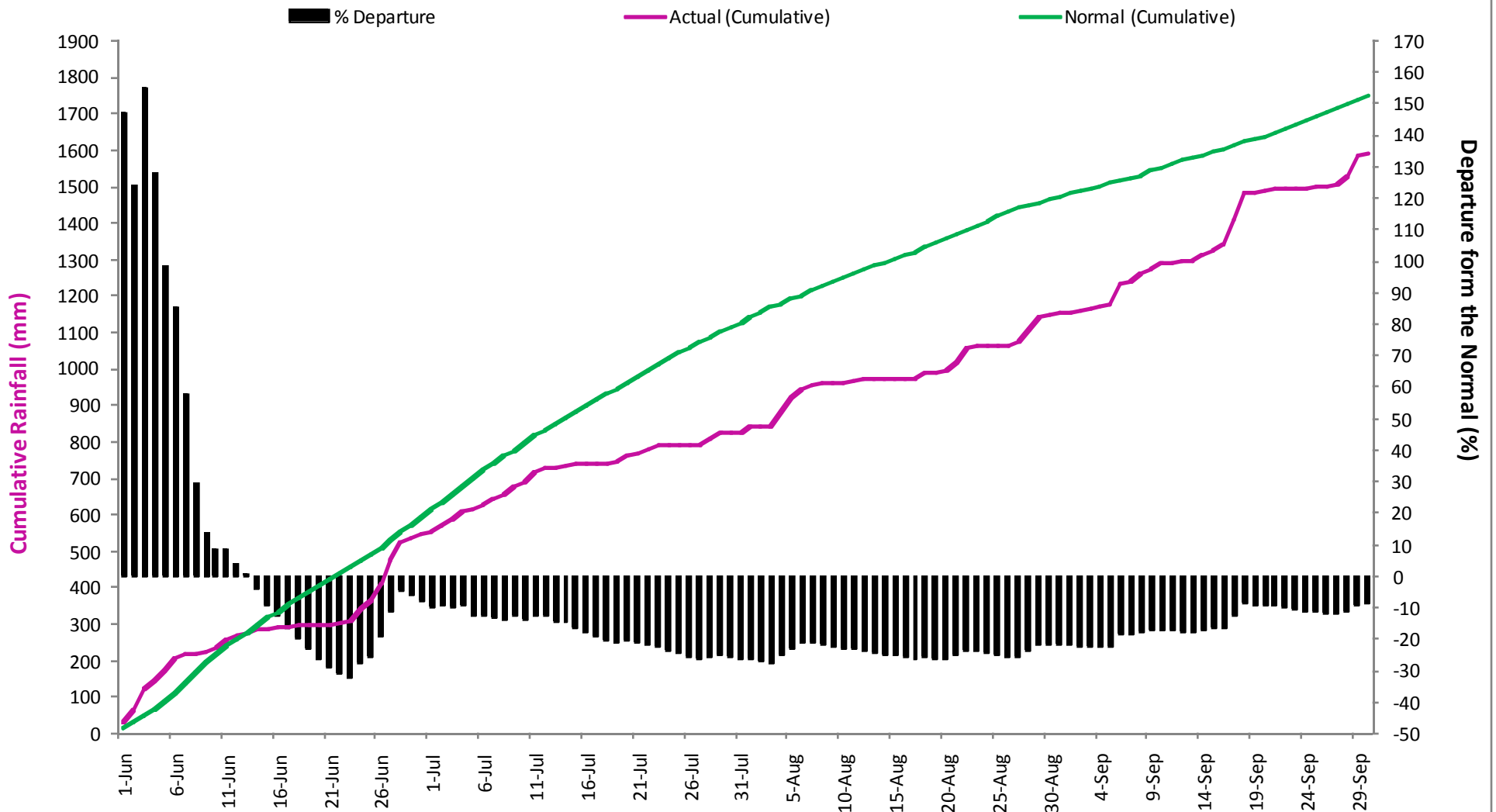
NORMAL= 2039.6 mm

DEPARTURE= -8.93 %

PERFORMANCE OF SOUTH WEST MONSOON 2017 OVER ALAPPUZHA

From 01-Jun-2017 to 30-Sep-2017

CUMULATIVE RAINFALL FOR ALAPPUZHA - SW MONSOON 2017



ACTUAL= 1591.61 mm

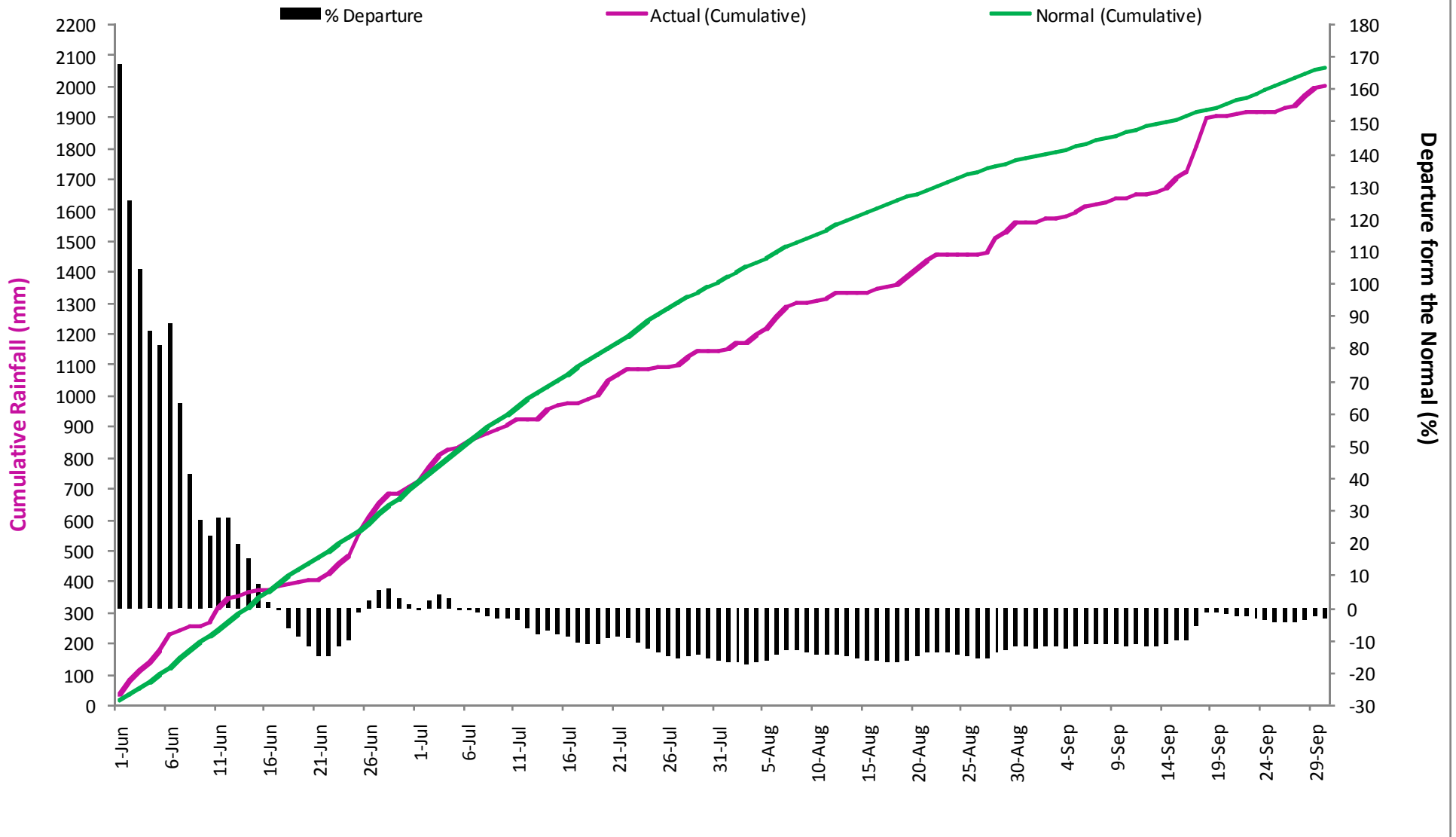
NORMAL= 1746.4 mm

DEPARTURE= -8.86 %

PERFORMANCE OF SOUTH WEST MONSOON 2017 OVER ERNAKULAM

From 01-Jun-2017 to 30-Sep-2017

CUMULATIVE RAINFALL FOR ERNAKULAM- SW MONSOON 2017



ACTUAL= 2004.62 mm

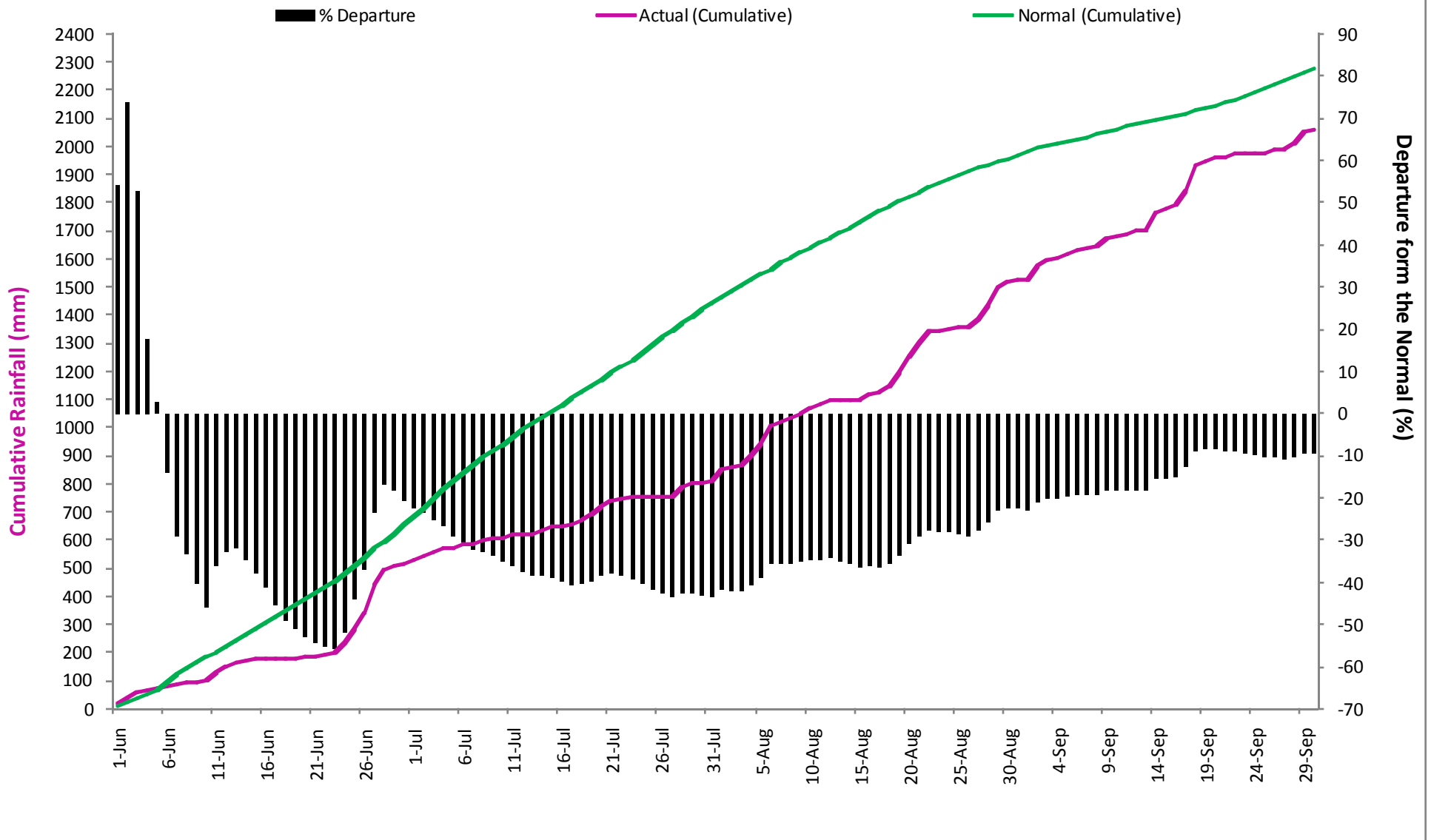
NORMAL= 2065.2 mm

DEPARTURE= -2.93 %

PERFORMANCE OF SOUTH WEST MONSOON 2017 OVER IDUKKI

From 01-Jun-2017 to 30-Sep-2017

CUMULATIVE RAINFALL FOR IDUKKI- SW MONSOON 2017



ACTUAL= 2058.96 mm

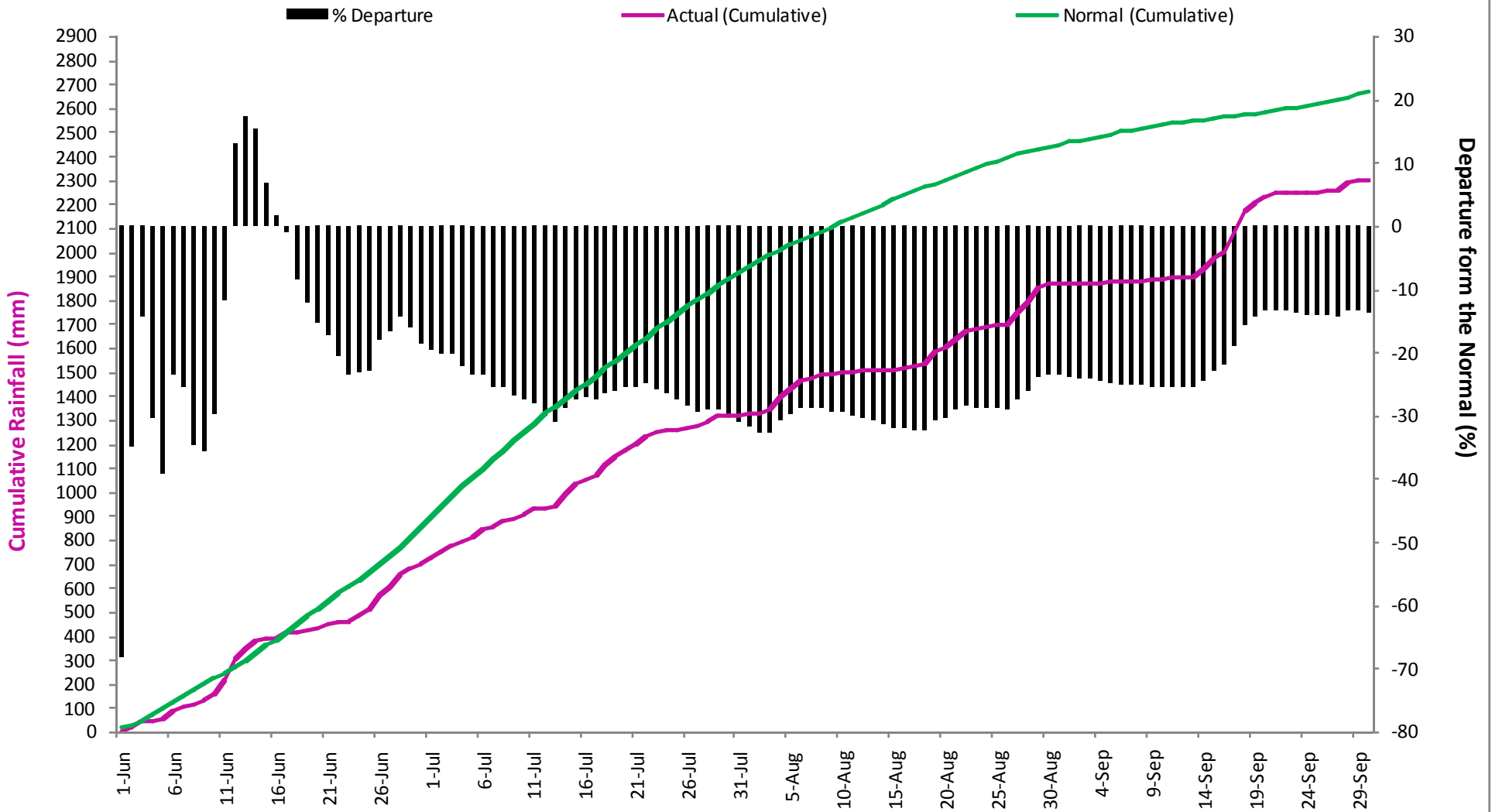
NORMAL= 2276.1 mm

DEPARTURE= -9.54 %

PERFORMANCE OF SOUTH WEST MONSOON 2017 OVER KANNUR

From 01-Jun-2017 to 30-Sep-2017

CUMULATIVE RAINFALL FOR KANNUR- SW MONSOON 2017



ACTUAL= 2301.3 mm

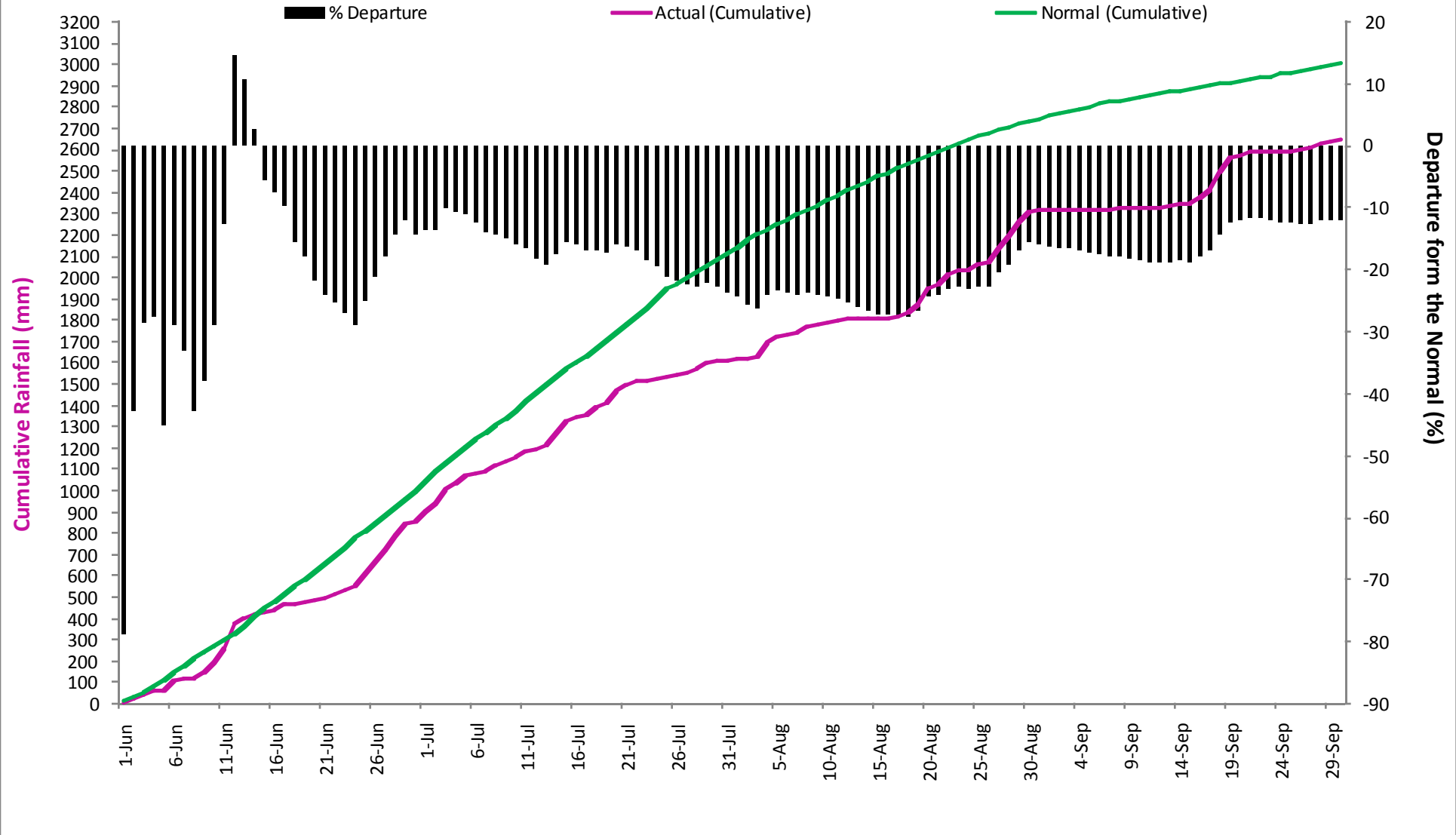
NORMAL= 2668.9 mm

DEPARTURE= -13.77 %

PERFORMANCE OF SOUTH WEST MONSOON 2017 OVER KASARAGOD

From 01-Jun-2017 to 30-Sep-2017

CUMULATIVE RAINFALL FOR KASARAGOD- SW MONSOON 2017



ACTUAL= 2644.3 mm

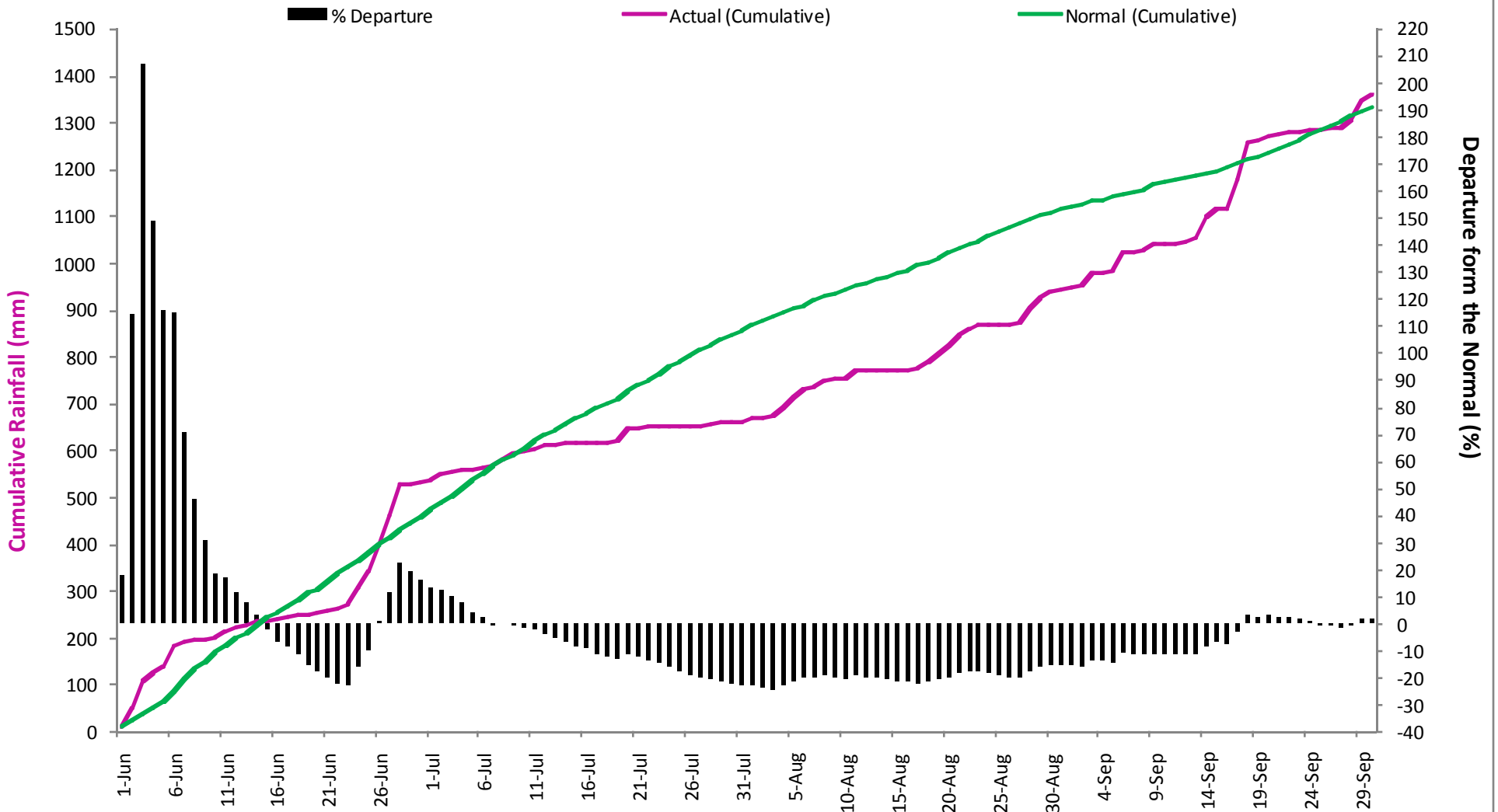
NORMAL= 3007.7 mm

DEPARTURE= -12.08 %

PERFORMANCE OF SOUTH WEST MONSOON 2017 OVER KOLLAM

From 01-Jun-2017 to 30-Sep-2017

CUMULATIVE RAINFALL FOR KOLLAM- SW MONSOON 2017



ACTUAL= 1357.15 mm

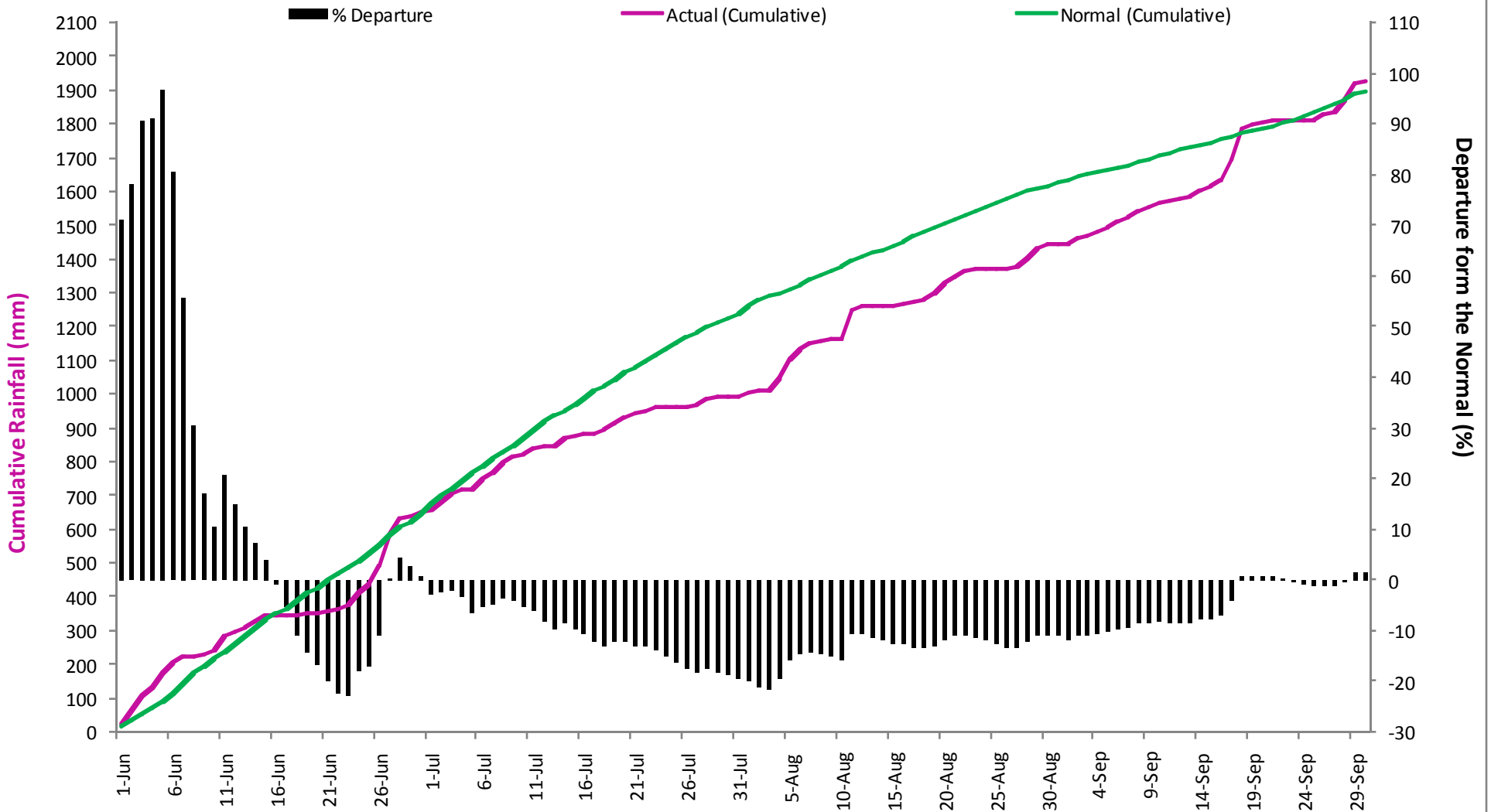
NORMAL= 1332.3 mm

DEPARTURE= 1.87 %

PERFORMANCE OF SOUTH WEST MONSOON 2017 OVER KOTTAYAM

From 01-Jun-2017 to 30-Sep-2017

CUMULATIVE RAINFALL FOR KOTTAYAM- SW MONSOON 2017



ACTUAL= 1929.55 mm

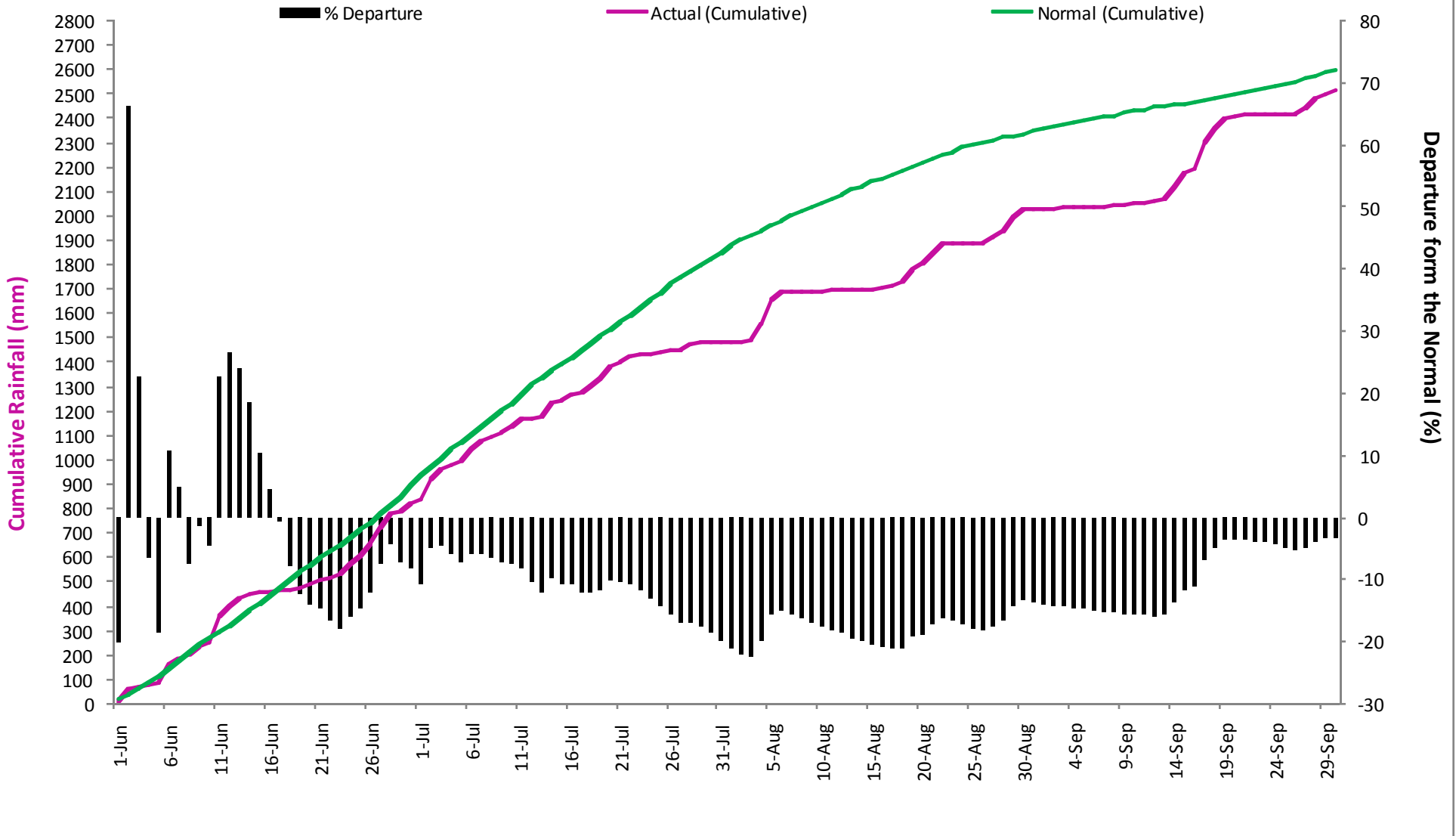
NORMAL= 1897.3 mm

DEPARTURE= 1.7 %

PERFORMANCE OF SOUTH WEST MONSOON 2017 OVER KOZHIKODE

From 01-Jun-2017 to 30-Sep-2017

CUMULATIVE RAINFALL FOR KOZHIKODE- SW MONSOON 2017



ACTUAL= 2521.63 mm

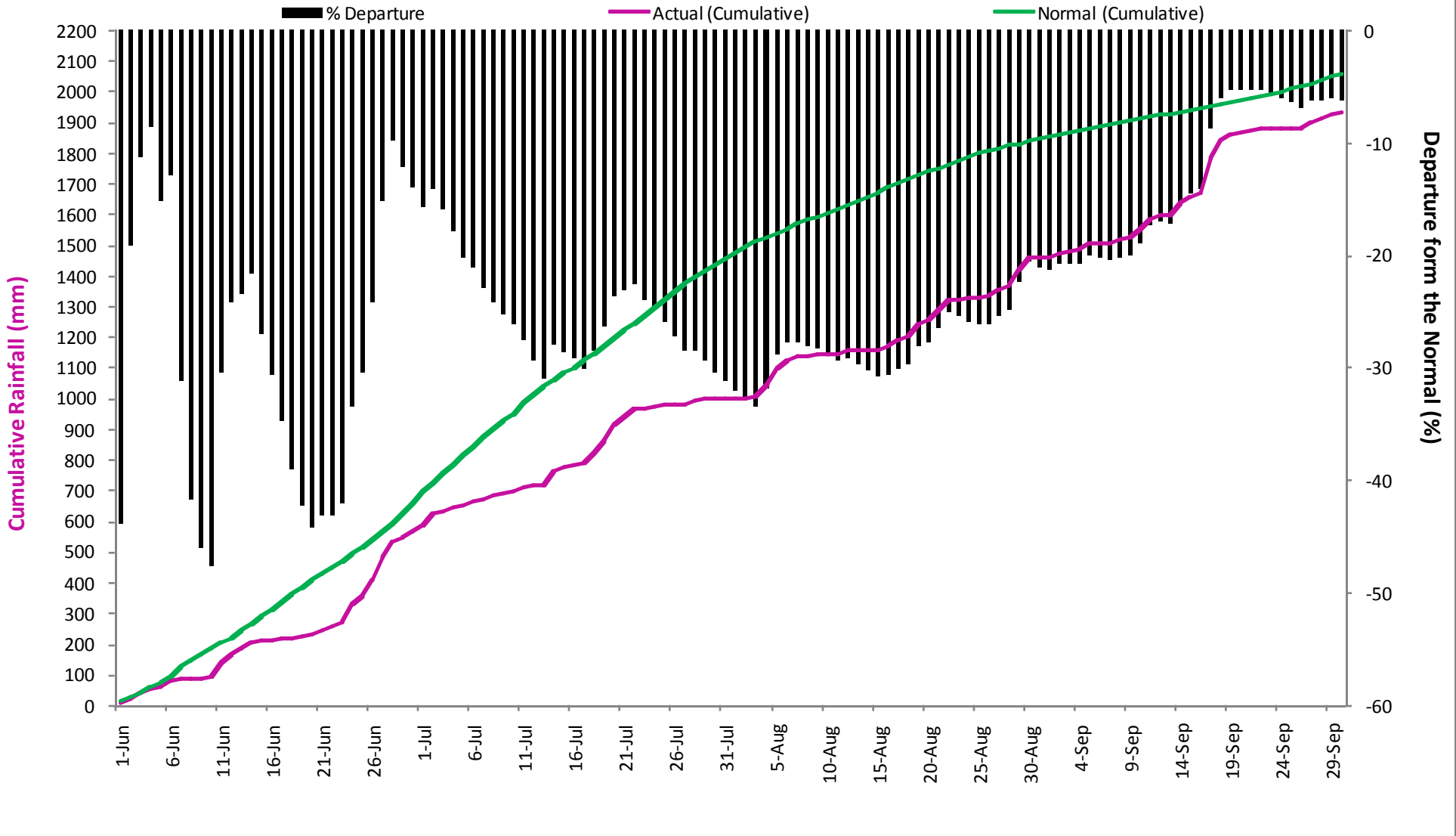
NORMAL= 2603.1 mm

DEPARTURE= -3.13 %

PERFORMANCE OF SOUTH WEST MONSOON 2017 OVER MALAPPURAM

From 01-Jun-2017 to 30-Sep-2017

CUMULATIVE RAINFALL FOR MALAPPURAM- SW MONSOON 2017



ACTUAL= 1933.49 mm

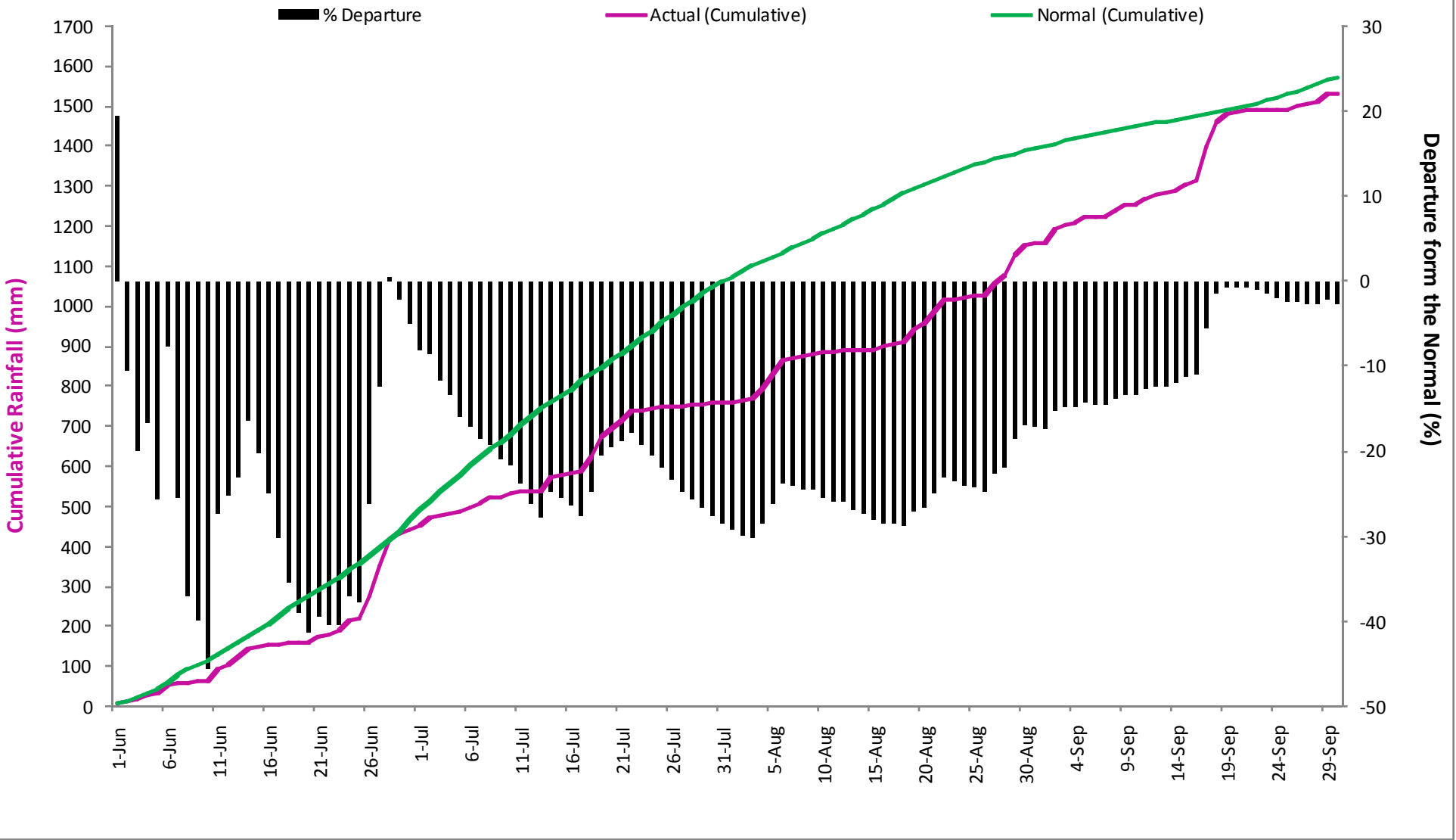
NORMAL= 2060.4 mm

DEPARTURE= -6.16 %

PERFORMANCE OF SOUTH WEST MONSOON 2017 OVER PALAKKAD

From 01-Jun-2017 to 30-Sep-2017

CUMULATIVE RAINFALL FOR PALAKKAD- SW MONSOON 2017



ACTUAL= 1531.23 mm

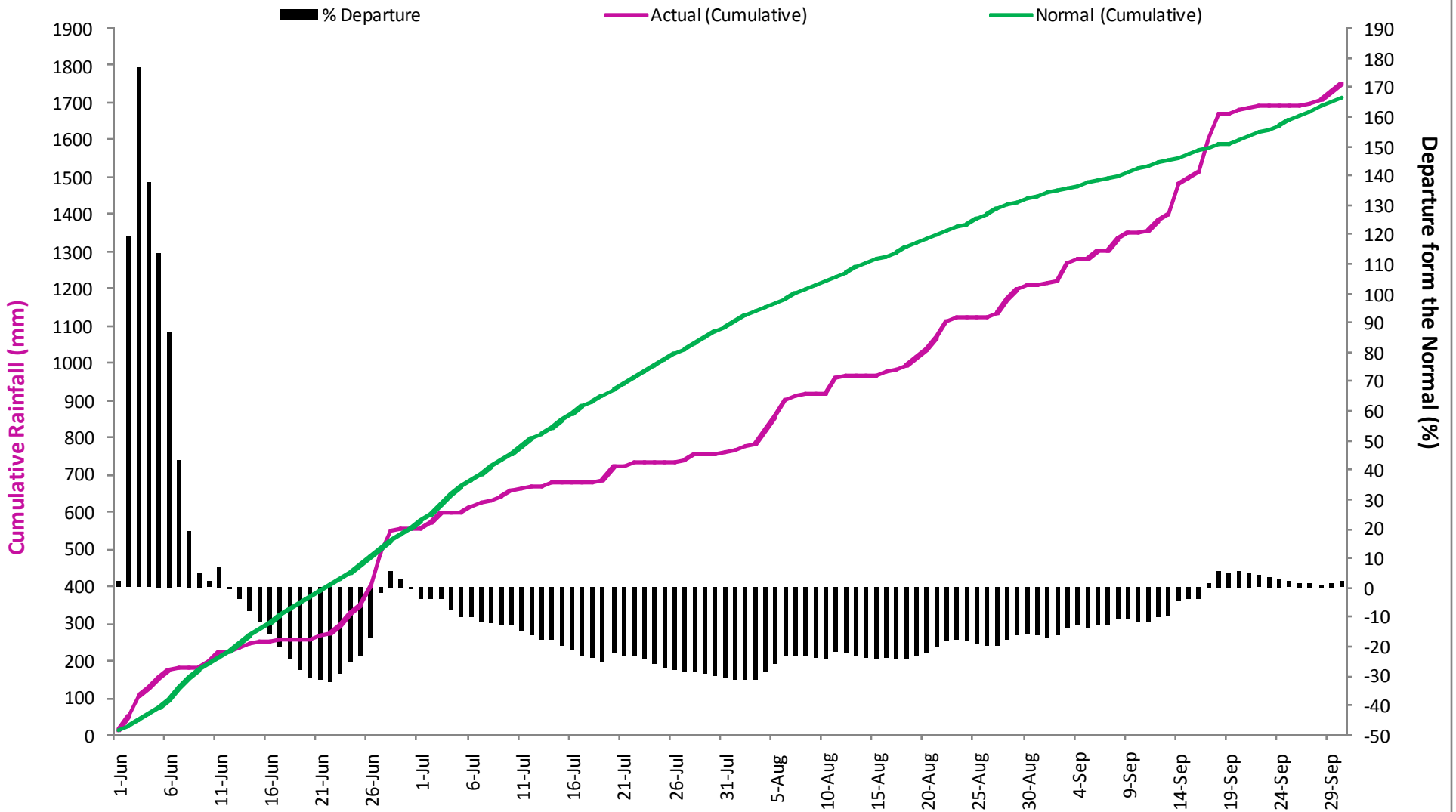
NORMAL= 1572 mm

DEPARTURE= -2.59 %

PERFORMANCE OF SOUTH WEST MONSOON 2017 OVER PATHANAMTHITTA

From 01-Jun-2017 to 30-Sep-2017

CUMULATIVE RAINFALL FOR PATHANAMTHITTA- SW MONSOON 2017



ACTUAL= 1754 mm

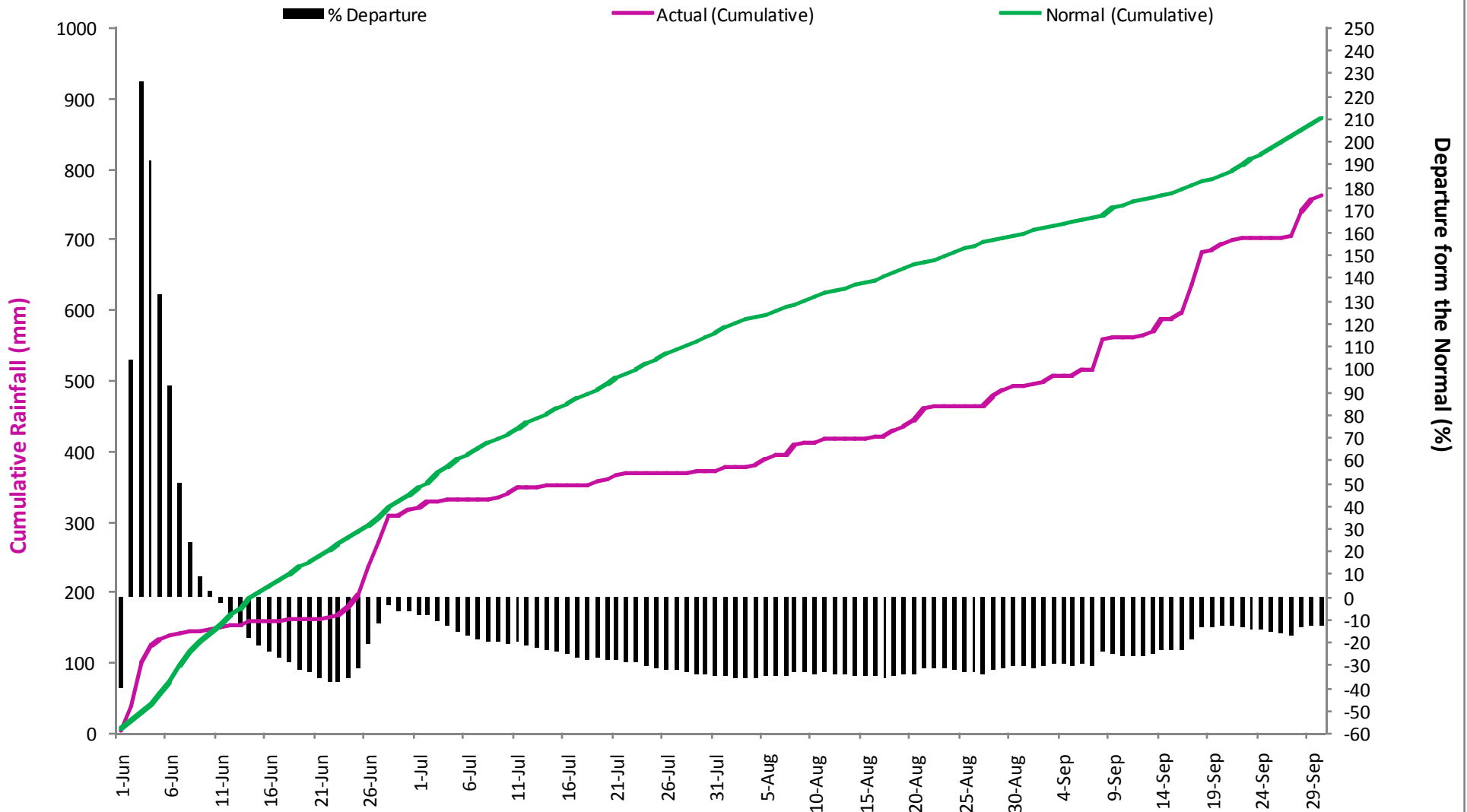
NORMAL= 1715.6 mm

DEPARTURE= 2.24 %

PERFORMANCE OF SOUTH WEST MONSOON 2017 OVER THIRUVANANTHAPURAM

From 01-Jun-2017 to 30-Sep-2017

CUMULATIVE RAINFALL FOR THIRUVANANTHAPURAM- SW MONSOON 2017



ACTUAL= 763.75 mm

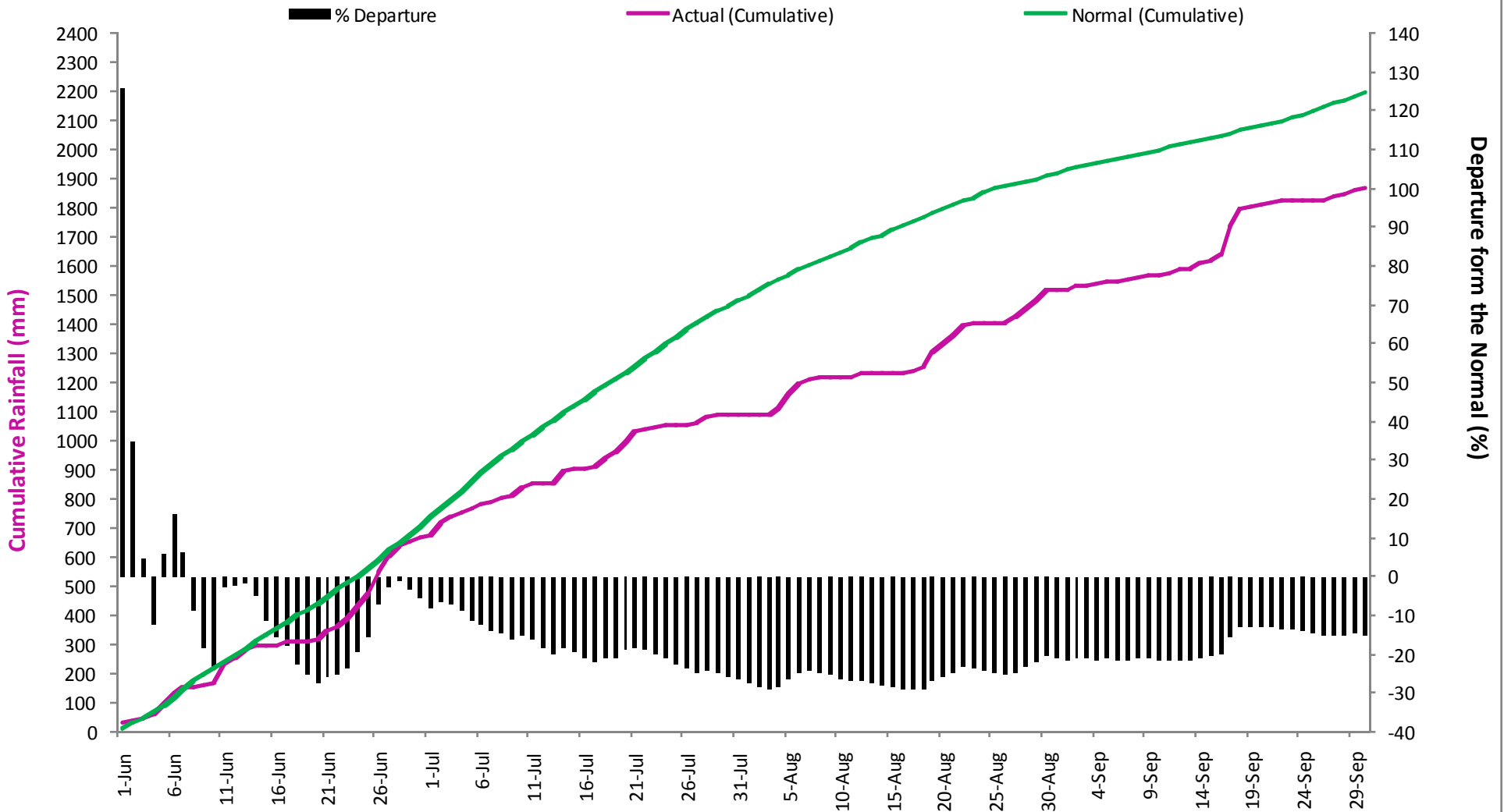
NORMAL= 871.3 mm

DEPARTURE= -12.34 %

PERFORMANCE OF SOUTH WEST MONSOON 2017 OVER THRISSUR

From 01-Jun-2017 to 30-Sep-2017

CUMULATIVE RAINFALL FOR THRISSUR- SW MONSOON 2017



ACTUAL= 1866.25 mm

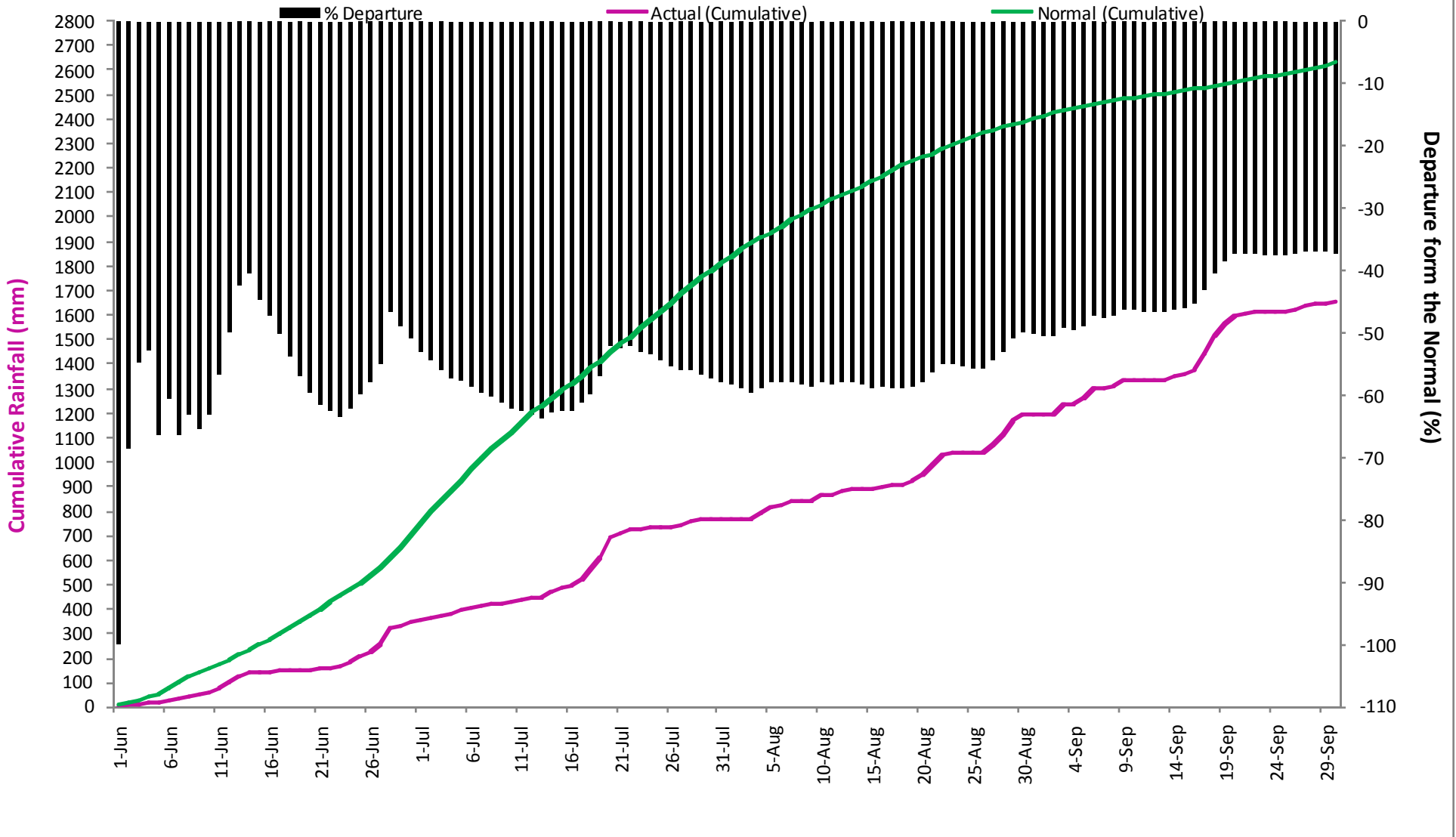
NORMAL= 2197.6 mm

DEPARTURE= -15.08 %

PERFORMANCE OF SOUTH WEST MONSOON 2017 OVER WAYANAD

From 01-Jun-2017 to 30-Sep-2017

CUMULATIVE RAINFALL FOR WAYANAD- SW MONSOON 2017



ACTUAL= 1652.12 mm

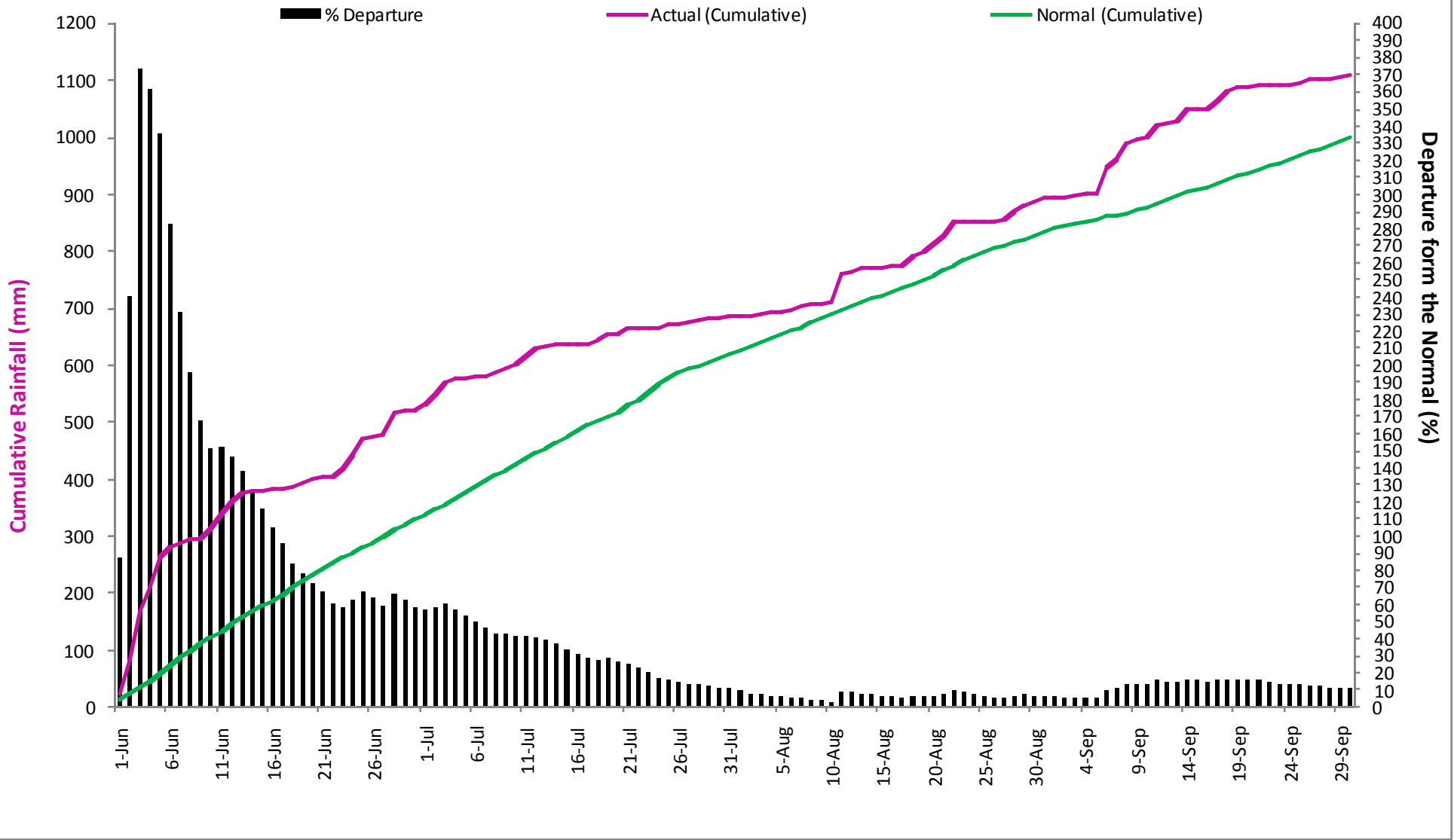
NORMAL= 2631.6 mm

DEPARTURE= -37.22 %

PERFORMANCE OF SOUTH WEST MONSOON 2017 OVER LAKSHADWEEP

From 01-Jun-2017 to 30-Sep-2017

CUMULATIVE RAINFALL FOR LAKSHADWEEP- SW MONSOON 2017



ACTUAL= 1108.33 mm

NORMAL= 998.4 mm

DEPARTURE= 11.01 %